



GREEN BRIDGE METALS

CSE: GRBM | OTCQB : GBMCF | FWB : J48

Resources for the Future

Copper and Critical Minerals in North America

Corporate Presentation

July 2026

Forward-Looking Statement

Except for the statements of historical fact, this presentation contains “forward-looking statements” and “forward-looking information” the meaning of the applicable securities legislation (collectively, “forward-looking information”) that is based on expectations, estimates and projections as at the date of this presentation. Forward-looking information in this presentation includes: statements regarding the Company’s mineral properties and projects, including the South Contact Zone Properties, the Serpentine Project and the Chrome Puddy Property; the Company’s exploration, evaluation and development plans, objectives, timelines and budgets; proposed drilling, infill drilling, metallurgical testing, engineering, environmental and technical studies; the potential to expand, upgrade or further define mineral resources; the potential to identify or incorporate additional metals, including copper, nickel, titanium, vanadium, cobalt and platinum group elements; the potential timing, completion or results of any preliminary economic assessment, pre-feasibility study or other technical study; the potential for future mining, processing or concentrate production; the potential significance, scale, continuity, grade or economic potential of mineralization; the potential benefits of infrastructure, jurisdictional advantages, critical minerals demand and government support; the Company’s ability to earn, maintain or acquire interests in its mineral properties; and the Company’s future business plans, objectives and strategy.

Factors that could cause actual results to differ materially from those described in such forward-looking information include, but are not limited to: the exploration and development of the Company’s mineral properties and projects progressing as expected; the accuracy of geological, sampling, drilling, assay, metallurgical and other technical data; the reliability of historical information and historical exploration results; the accuracy of mineral resource estimates and the assumptions underlying such estimates; the ability of the Company to complete planned exploration, drilling, metallurgical, engineering and environmental programs; the ability of the Company to obtain, maintain or amend required permits, approvals and authorizations; the availability of financing, equipment, personnel, contractors and other resources on acceptable terms; prevailing and future commodity prices, exchange rates and market conditions; the continued validity of the Company’s mineral property interests and option agreements; the absence of material adverse changes in applicable laws, regulatory requirements, environmental requirements, community or stakeholder relations, and general business, economic and market conditions; and the assumptions, qualifications and limitations set out in the Company’s technical reports and other public disclosure.

Forward-looking information is subject to known and unknown risks, uncertainties and other factors that may cause actual results, performance, achievements or developments to differ materially from those expressed or implied by such forward-looking information. These risks and uncertainties include, among others, risks inherent in mineral exploration and development; uncertainty of mineral resource estimates; the fact that mineral resources are not mineral reserves and do not have demonstrated economic viability; the speculative nature of exploration-stage and resource-stage mineral projects; the uncertainty that additional exploration will result in the discovery, expansion or upgrading of mineral resources; risks relating to historical estimates and historical exploration information; metallurgical, processing, engineering and technical risks; permitting, environmental, title, land access, regulatory and community relations risks; risks relating to the Company’s ability to satisfy obligations under its option agreements; financing and liquidity risks; commodity price and exchange rate volatility; inflation, tariffs, supply chain constraints and availability of labour, equipment and services; changes in laws, policies and regulatory requirements; risks associated with operating in jurisdictions outside Canada; and other risks described in the Company’s public disclosure documents filed under its profile on SEDAR+. The Company has also assumed that no significant events occur outside of the Company’s normal course of business. Although the Company believes that the assumptions inherent in the forward-looking information are reasonable, forward-looking information is not a guarantee of future performance and accordingly undue reliance should not be put on such information due to the inherent uncertainty therein.

Any forward-looking information in the presentation speaks only as of the date on which it is made and, except as may be required by applicable laws, the Company disclaims any intent or obligation to update any forward-looking information, whether as a result of new information, future events or results or otherwise. Michael Dufresne, M.Sc., P.Geol., P.Geo of APEX Geoscience Ltd. has reviewed the presentation, verified the data and assumes responsibility for scientific and technical disclosure contained herein.

Confidentiality

This presentation and the contents herein is strictly confidential. This presentation is not a public document and may not be shared or reproduced.

This presentation does not constitute (and may not be construed to be) a solicitation or offer by the Company or any of our respective directors, officers, employees, representatives or agents to buy or sell any securities of any person in any jurisdiction, or a solicitation of a proxy of any securityholder of any person in any jurisdiction, in each case, within the meaning of applicable laws

Why Green Bridge Metals?



Focus on Developing Critical Mineral Assets in North America

Strategic portfolio of projects designed to minimize risk, unveil potential, and enhance value



Tier One Jurisdictions

Federal government support and incentive for critical mineral development in both United States and Canada



Three Mineral Resource Projects

Serpentine: Copper, Nickel
Titac: Titanium, Copper, Vanadium
Chrome Puddy: Nickel



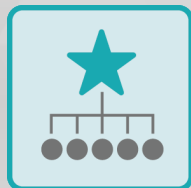
Domestic Critical Minerals

Leveraging and growing existing resource base in the U.S. and Canada: Focus on copper, nickel, vanadium and titanium



Catalysts for Growth

Generating compelling exploration targets and developing known Mineral Resources in portfolio



Pipeline of Projects with Exceptional Potential

Five critical mineral projects in the portfolio, all with potential to be developed into economic assets.



Strong Technical and Business Leadership

Local Minnesota technical team with over 28 years of experience in the Duluth Complex and surrounding area. Business management team with over 45 years combined experience in capital markets

Corporate Overview

Opportunities for domestic production of FOUR critical minerals

Copper-Nickel-PGE-Cobalt

Opportunities: Serpentine – *Development*
Skibo – *Exploration*
Wyman-Siphon – *Exploration*
Chrome Puddy – *Exploration*

Commodities: Cu, Ni, Co, Pd, Pt, Au

Location: Minnesota, U.S.A.
Thunder Bay Mining District
Ontario, Canada

Titanium-Copper-Vanadium

Opportunities: Titac – *Exploration-Development*
Boulder - *Exploration*

Commodities: Cu, TiO₂, PGE, V

Location: Minnesota, U.S.A.

Capital Structure

CSE Listing	GRBM
I/O Shares	231,247,798
Market Cap (CAD)	\$45M
52 Week High/Low	\$0.38/\$0.08

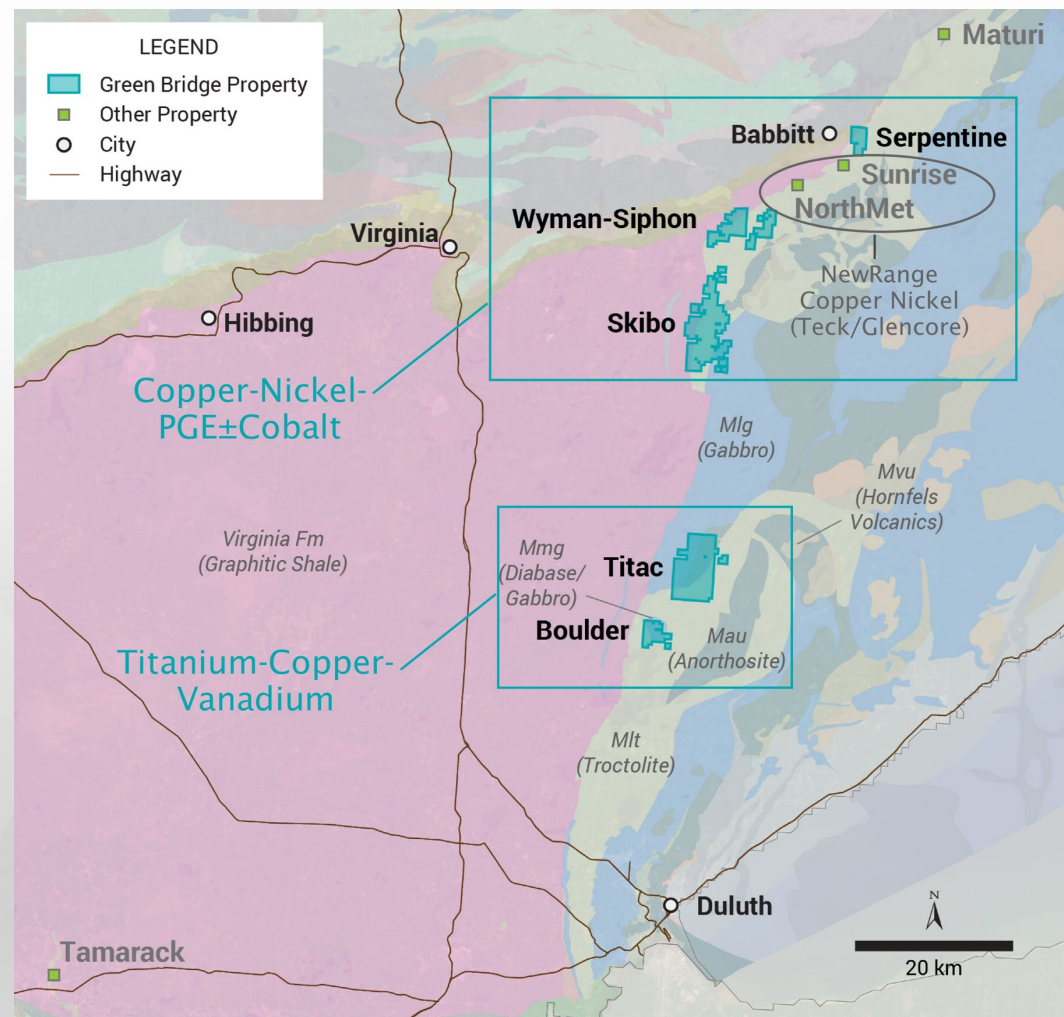
All Figures as of June 4, 2026, unless otherwise stated

South Contact District

Advanced Opportunity in Duluth Complex, MN USA

- **Three Magmatic Cu–Ni–PGE- Co properties:** Serpentine, Skibo, Wyman-Siphon
- **Two TiO₂-Cu-Vanadium Properties:** Titac, Boulder
- Opportunities for high-grade massive sulphide and disseminated styles of Cu-Ni ±PGE mineralization
- Emerging exploration model of Oxide Ultramafic Intrusions for both Cu-Ni ±PGE and Ti-V mineralization
- Current titanium mineral resource and prospectivity to expand the known mineral resource in 2026-27 to include copper

Cu Copper	Ni Nickel	Ti Titanium	Pd Palladium	Pt Platinum	Au Gold	V Vanadium	Co Cobalt
---------------------	---------------------	-----------------------	------------------------	-----------------------	-------------------	----------------------	---------------------



Disclosure of information about adjacent properties is for contextual and geological comparison purposes only. It does not imply that the Company's Property will achieve similar results. Mineral resources or reserves on adjacent properties do not necessarily indicate economic viability or similar potential on the subject property.

Serpentine Copper – Nickel Development Asset

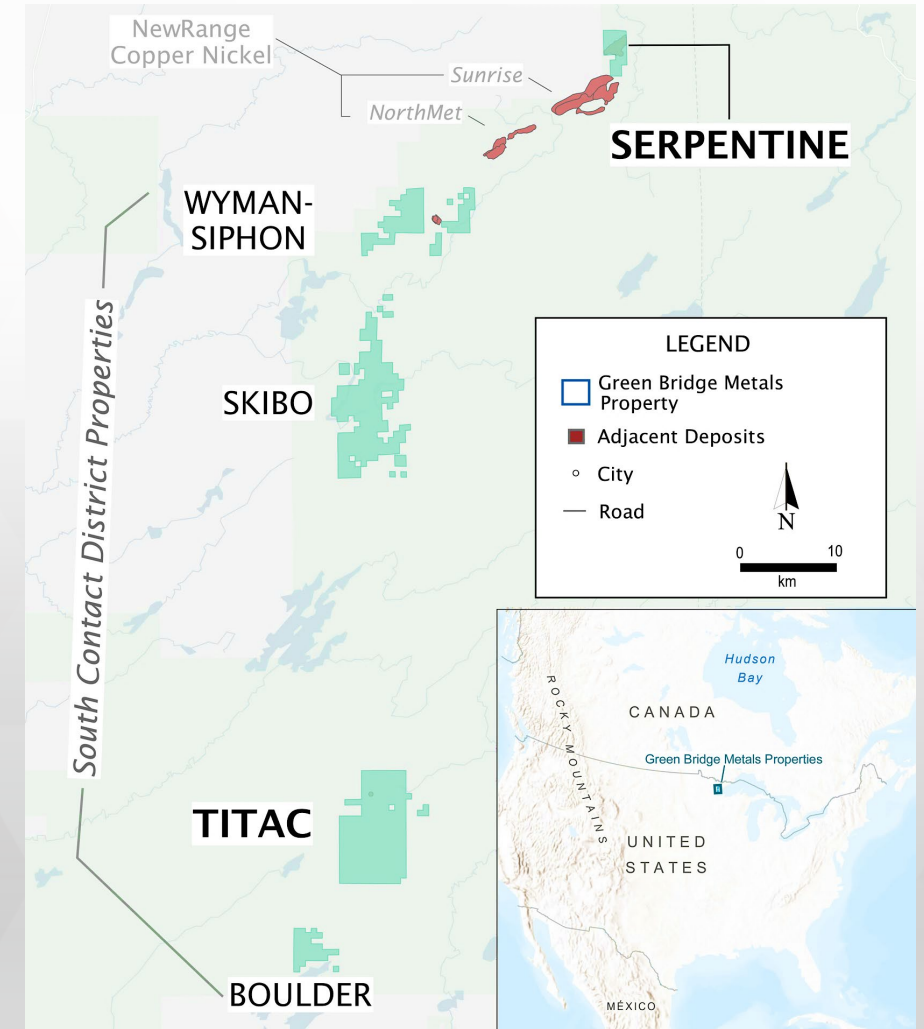
Inferred Mineral Resource at Serpentine:

~280Mt @ 0.53 CuEq^{2*} Inferred, 21.6 Mt 0.69% CuEq Indicated

Pit Area Classification	Tonnes (k)	Cu (%)	Ni (%)	Co (%)	S (%)	Cu-Eq (%)
Upper 100						
Indicated	11,616	0.34	0.11	0.009	1.38	0.50
Inferred	120,307	0.32	0.11	0.008	1.69	0.47
Lower 300						
Indicated	7,902	0.49	0.15	0.013	2.70	0.70
Inferred	153,588	0.40	0.13	0.007	2.30	0.57
Lower 400						
Indicated	354	0.34	0.11	0.004	1.42	0.47
Inferred	5,607	0.45	0.13	0.002	3.79	0.63
Massive Sulphide 500						
Indicated	1,775	1.16	0.52	0.051	13.58	2.00
Inferred	445	1.12	0.48	0.055	12.91	1.90
Total						
Indicated	21,646	0.46	0.16	0.014	2.87	0.69
Inferred	279,947	0.37	0.12	0.007	2.08	0.53

Cu-Equivalent (Cu-Eq)% = $[(Ni\% \times \$105.32) + (Cu\% \times \$70.37) + (Co\% \times \$130.21) - \$2.40] / 70.37$

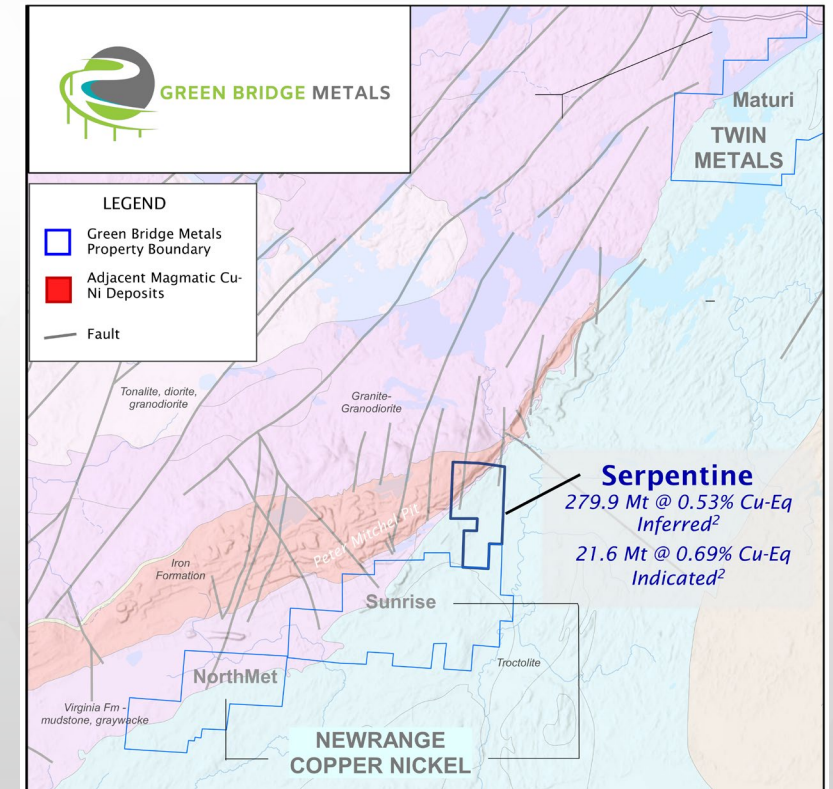
The CuEq calculation does **not** include metallurgical recovery rates or payable factors. It assumes 100% recovery for all metals for illustrative purposes only. Actual recoveries may vary significantly and are subject to ongoing metallurgical test work. No economic analysis has been completed. CuEq is used solely for comparative grading and visualization purposes and should not be interpreted as representing recoverable metal or economic value.



Serpentine – Cu-Ni: De-Risking and Advancement Strategy

Mesabi Mining District Northern Minnesota, U.S.A.

- Pre-Feasibility Pathway:
 - Exploration drilling in Q2-Q3 2026
 - Infill Drilling: 25,500 meters of core drilling
 - Water Monitoring Wells
 - Metallurgical Studies
 - Engineering and Environmental
- Copper-Nickel with potential PGE credits at shallow depth
- Preliminary (2012) metallurgical work indicated strong recoveries of copper and nickel
- Situated in established mining jurisdiction with neighboring railways, roadways, processing facilities and other infrastructure



Disclosure of information about adjacent properties is for contextual and geological comparison purposes only. It does not imply that the Company's Property will achieve similar results. Mineral resources or reserves on adjacent properties do not necessarily indicate economic viability or similar potential on the subject property.

Serpentine – Cu-Ni±Co: Solid Infrastructure

Mesabi Mining District Northern Minnesota, U.S.A.

- Centrally located in mining friendly jurisdiction with a history of iron mining (Iron Range, Minnesota)
- Shares northern border with historic Cleveland-Cliffs Peter Mitchell, open-pit iron mine.
- Site easily accessible to paved roads, electrical infrastructure and railroad.
- Metallurgical processing infrastructure exists in the region



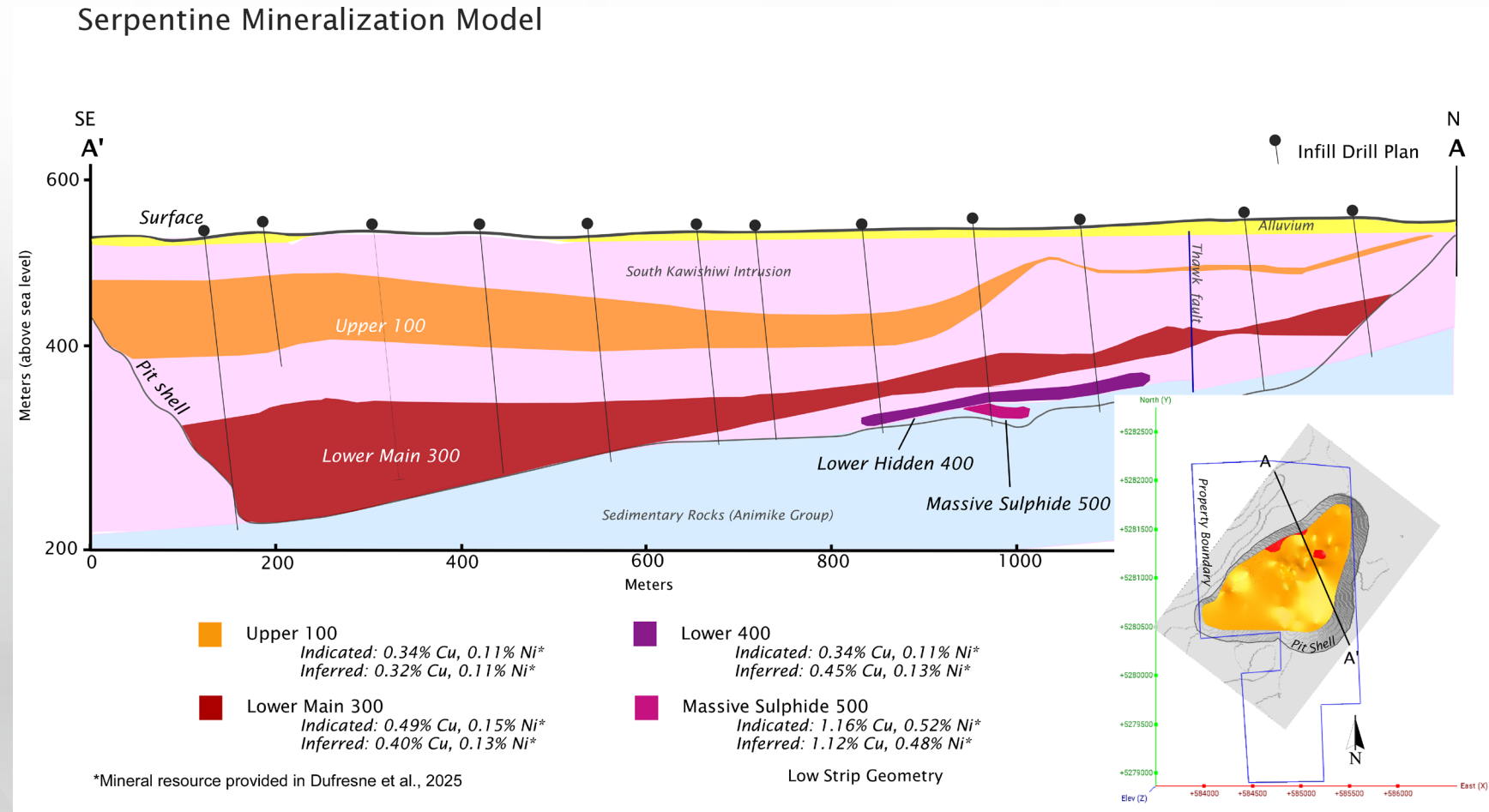
Serpentine – Copper-Nickel Opportunity

Mesabi Mining District Northern Minnesota, U.S.A.

Serpentine Objectives

- Upgrade mineral resources from Inferred to Indicated
- Increase overall Cu-Eq grade by expanding known high grade horizon
- Optimize metals value by incorporating PGE assays in future resource models
- Metallurgical testing
- 2027:** Preliminary Economic Assessment
- 2029:** Pre-Feasibility Study
- Optimize Low Strip Ratio

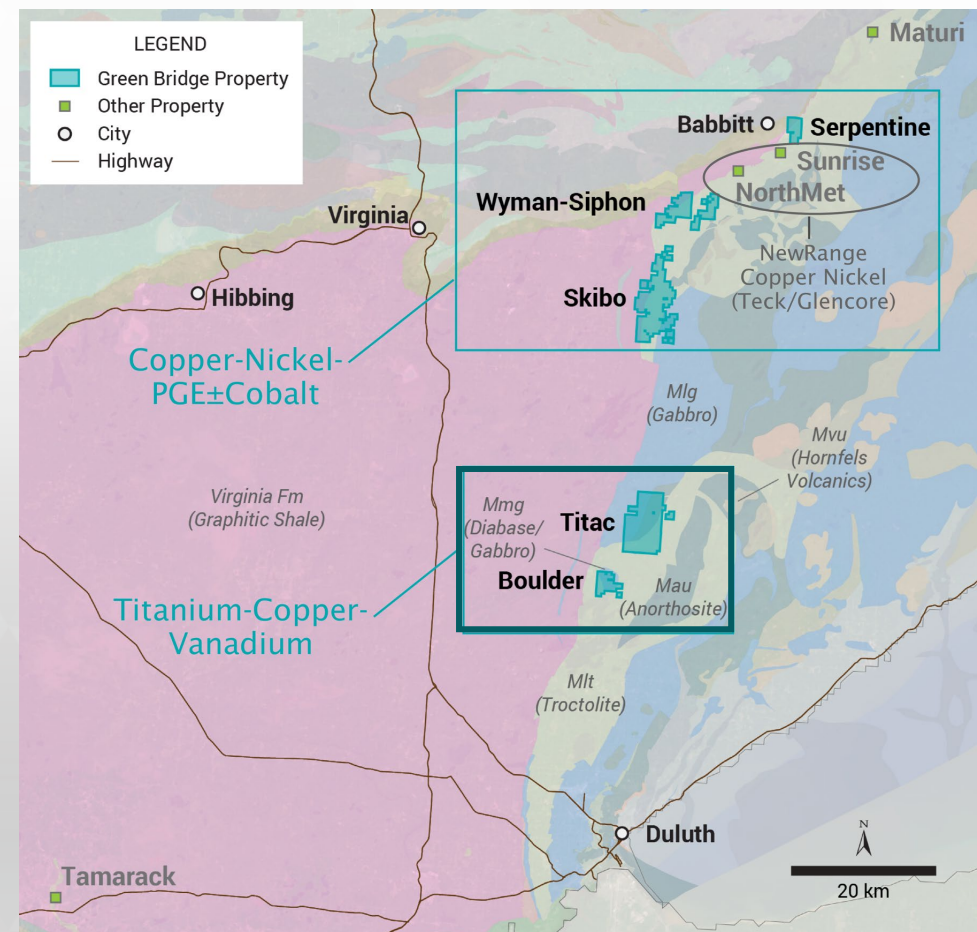
Serpentine Mineralization Model



South Contact District

Advanced Opportunity in an Underexplored Region of the Duluth Complex, MN USA

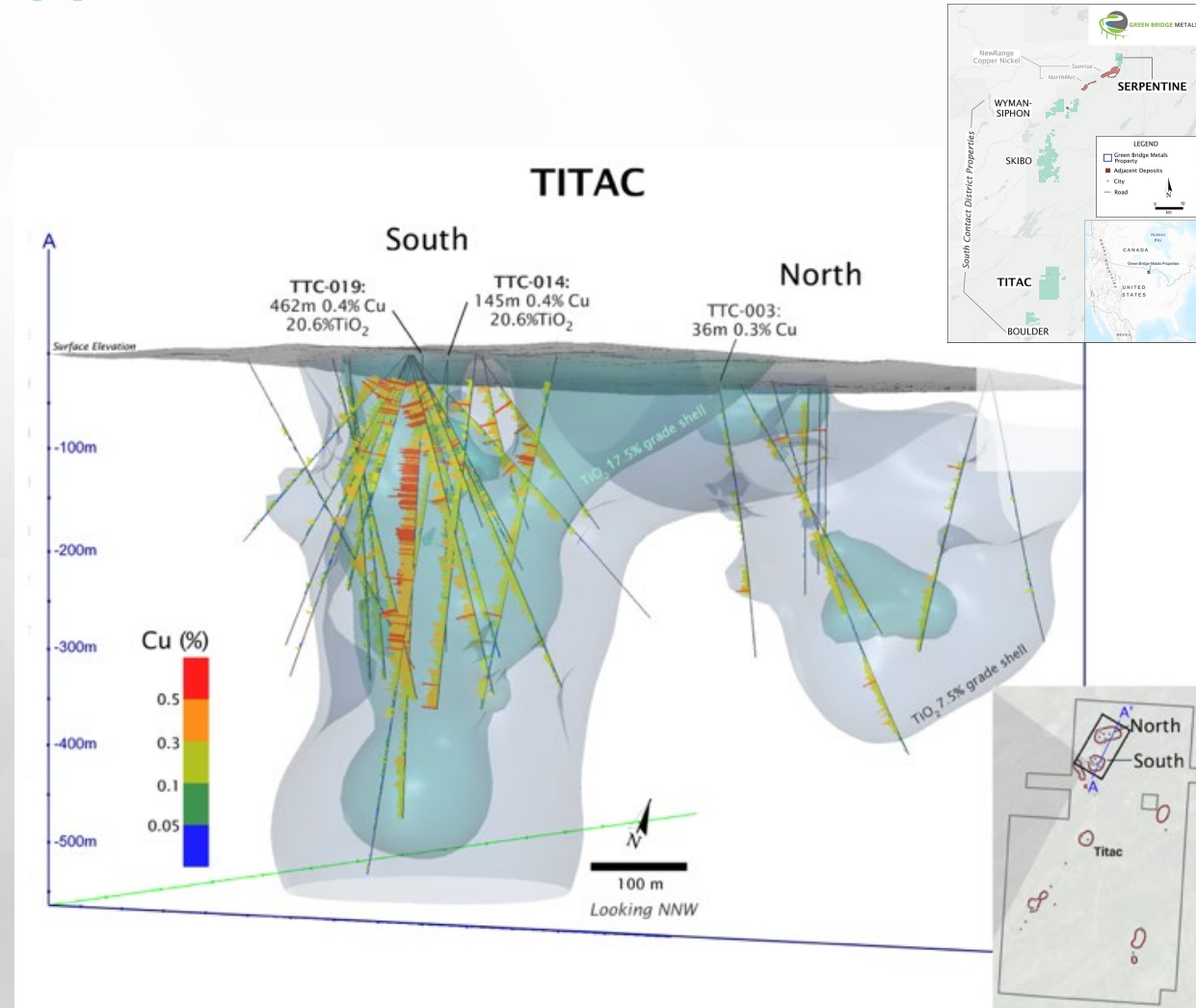
- **Three Magmatic Cu–Ni–PGE- Co properties:** Serpentine, Skibo, Wyman-Siphon
- **Two TiO₂-Cu-Vanadium Properties: Titac, Boulder**
- Opportunities for high-grade massive sulphide and disseminated styles of Cu-Ni ±PGE mineralization
- Emerging exploration model for oxidized ultramafic intrusions for both Cu-Ni ±PGE and Ti-V mineralization
- Current titanium mineral resource and prospectivity to expand the known mineral resource in 2026 to include copper



Titac – Titanium Resource with Copper Potential

Northern Minnesota, U.S.A.

- High-grade Titanium Mineral Resource – Potentially Expandable in All Directions
- Potential to Expand Mineral Resource @ Titac North
- 46.6 Mt of 15% TiO₂ Inferred Mineral Resource Estimate that contains 13.3 Mt Ilmenite having a TiO₂:Ilmenite Ratio of 0.526:1¹
- Significant Copper Mineralization Unrealized
- Magmatic copper mineralization within current TiO₂ resource:
 - TTC-014: 173m of 0.39% Cu, 14.9% TiO₂¹
 - TTC-019: 461.9m of 0.37% Cu, 20.6% TiO₂¹
 - TTC-027: 356m of 0.25% Cu, 14.1% TiO₂¹
 - TTC-015: 121.6m of 0.29% Cu, 13.3% TiO₂¹



¹Technical Report and Mineral Resource Estimate for the South Contact Zone St Louis County, Minnesota, USA" with an effective date of September 18, 2024, prepared by Michael B. Dufresne (P.Geol, P.Geo), A. Turner (P.Geol, P.Geo,), F. Clarke (P.Geo), C. Bohm (P.Geo)

Titac – Ongoing Phase 1 Diamond Core Drilling Program

Highlights

- Three drill holes completed totaling 1,196 meters during the first phase of the 2026 Titac drill program.*
- Visible chalcopyrite-bearing sulfide mineralization observed across intervals of approximately 100–450 meters during geological logging. See News Release dated March 26, 2026
- Ilmenite observed throughout the Oxide Ultramafic Intrusion consistent with the Titac South titanium dioxide resource. See News Release dated March 26, 2026
- Samples prepared for shipment to an independent laboratory; assays pending.

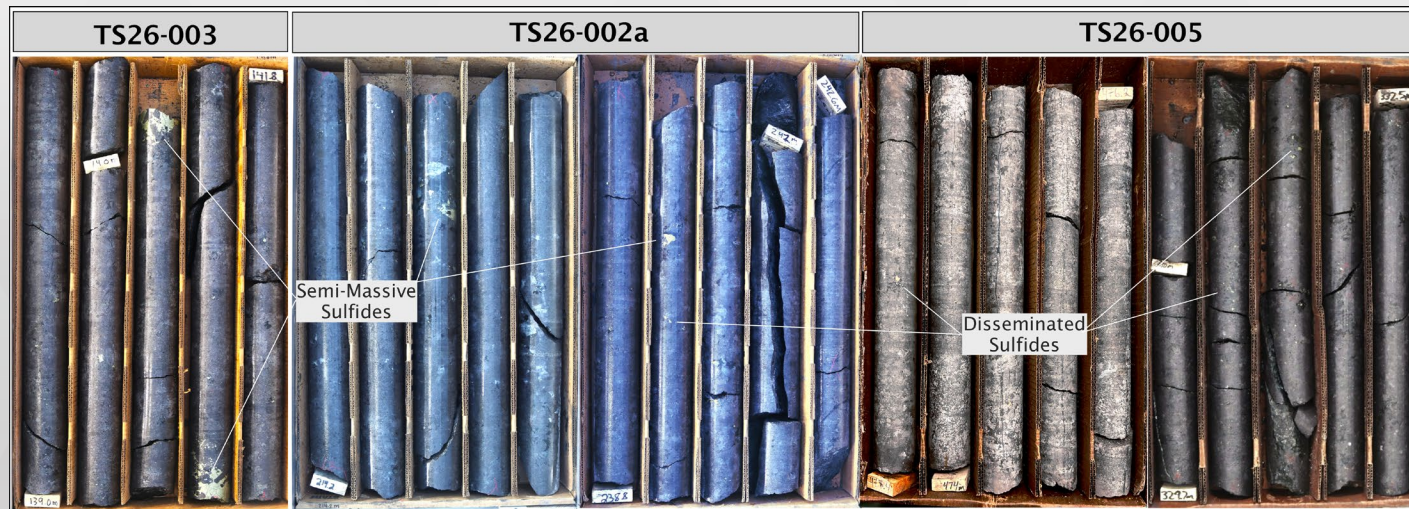


Fig 1. Select images of HQ core from the first three holes at the Titac South drilling program. Graphics pointing out examples of styles of sulfide mineralization being observed throughout much of the core.

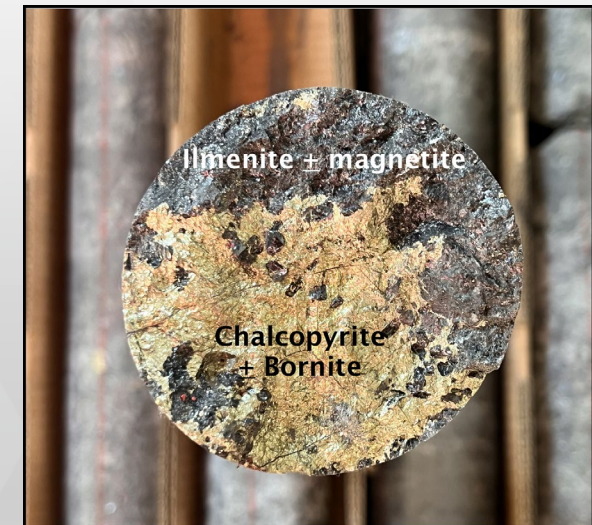


Figure 2. Cross-Section image of HQ core currently being drilled at Titac South. Fracture surface contains semi-massive chalcopyrite and bornite hosted in a matrix of massive ilmenite and magnetite (+ titanomagnetite).

Titac – Initial Assay Results Phase 1 Diamond Drill Program

Highlights

- Six of six holes completed in the Phase 1 Titac South program intersected observable sulphide mineralization.
- Initial assays from the first three holes confirm broad copper mineralization within the OUI.
- TS26-005 returned 152 m @ 0.31% Cu, 13.7% TiO₂ and 0.15% V₂O₅.*
- TS26-003 returned 190 m @ 0.30% Cu, 11.4% TiO₂ and 0.13% V₂O₅, including 14.0 m @ 0.48% Cu, 13.8% TiO₂ and 0.13% V₂O₅.*
- TS26-002a returned 54.0 m @ 0.20% Cu, 9.3% TiO₂ and 0.10% V₂O₅.*
- Copper mineralization was observed over broad downhole intervals within the OUI.
- Drilling results are consistent with targets generated from 3D VTEM inversion modelling.
- Multiple untested geophysical anomalies have been identified across the property.

*See News Release dated May 27, 2026

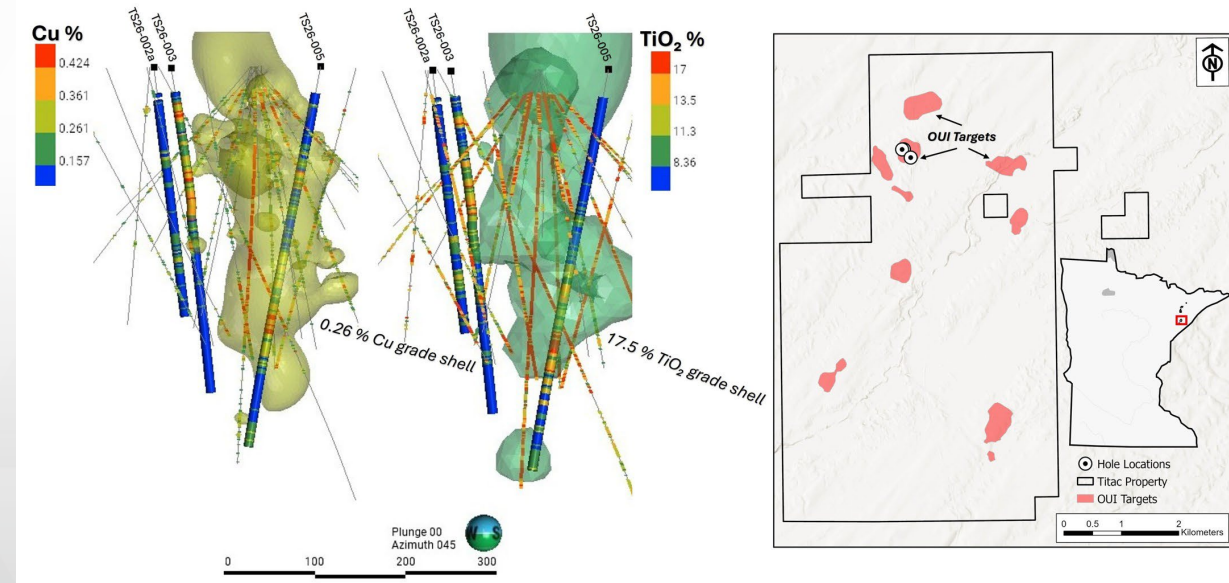


Figure 3. Map of the Titac property showing the geology, geophysical targets (red polygons), and recent drill program on the right. On the left is the modelled TiO₂ (17.5% cutoff) and Cu (0.26% cutoff) looking northeast, with representative intercepts displayed along drill traces. Results from the current drill program are labelled and bolded traces, while historic drill traces and grades are shown as narrower lines.

Drill Hole ID	Grid	Easting_UTM	Northing_UTM	TD_m	Azimuth	Inclination
TS26-001	WGS84	567841	5227606	293.2	110	-70
TS26-002a	WGS84	567861	5227556	310.9	90	-80
TS26-003	WGS84	567894	5227558	403.3	110	-80
TS26-004	WGS84	568009	5227447	286.4	110	-80
TS26-005	WGS84	568012	5227415	474.1	310	-80
TS26-007	WGS84	567859	5226679	382	330	-70

Titac South 2026 Drill Program Significant Intercepts

- Assay results from the first three holes (TS26-002a, TS26-003 and TS26-005) confirm copper mineralization over broad intervals, summarized in Table 1.
- All reported intervals are downhole lengths. True widths cannot currently be determined with confidence because of the irregular geometry of the mineralized zones.
- Assays for remaining core holes drilling are still pending. Results will be released once received.

Hole ID	From (m)	To (m)	Interval (m)	Cu (%)	TiO2 (%)	V2O5 (%)	PGE (ppb)
TS26-002a	32.8	310.9	278.1	0.12	6.9	0.10	15.5
	36.8	47.0	10.2	0.29	8.5	0.18	10.6
	103.0	125.0	22.0	0.23	7.5	0.08	23.1
Including	115.0	117.0	2.0	0.39	16.9	0.21	171.0
	207.0	261.0	54.0	0.20	9.3	0.10	19.3
TS26-003	29.9	403.3	373.4	0.18	9.0	0.12	19.1
	39.0	229.0	190.0	0.30	11.4	0.13	22.9
Including	127.0	141.0	14.0	0.48	13.8	0.13	18.7
	231.0	233.0	2.0	0.21	15.9	0.25	260.0
TS26-005	33.0	476.2	443.2	0.20	9.3	0.11	14.8
	115.0	153.0	38.0	0.27	6.3	0.08	19.1
	163.0	191.0	28.0	0.19	9.0	0.13	17.1
	231.0	383.0	152.0	0.31	13.7	0.15	21.7
Including	311.0	335.0	24.0	0.46	19.0	0.17	32.3
	445.0	476.2	31.2	0.21	9.84	0.14	11.4

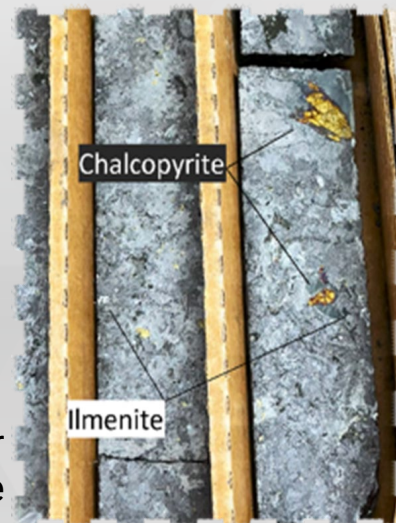
Table 1. Titac South 2026 Drill Program significant intercepts. The first reported interval for each hole represents the full in-hole interval and is provided for context. Drill hole details, including collar locations, azimuth, dip and total depth, are available at Appendix 1. See News Release dated May 27, 2026

Titac – Exploration Potential

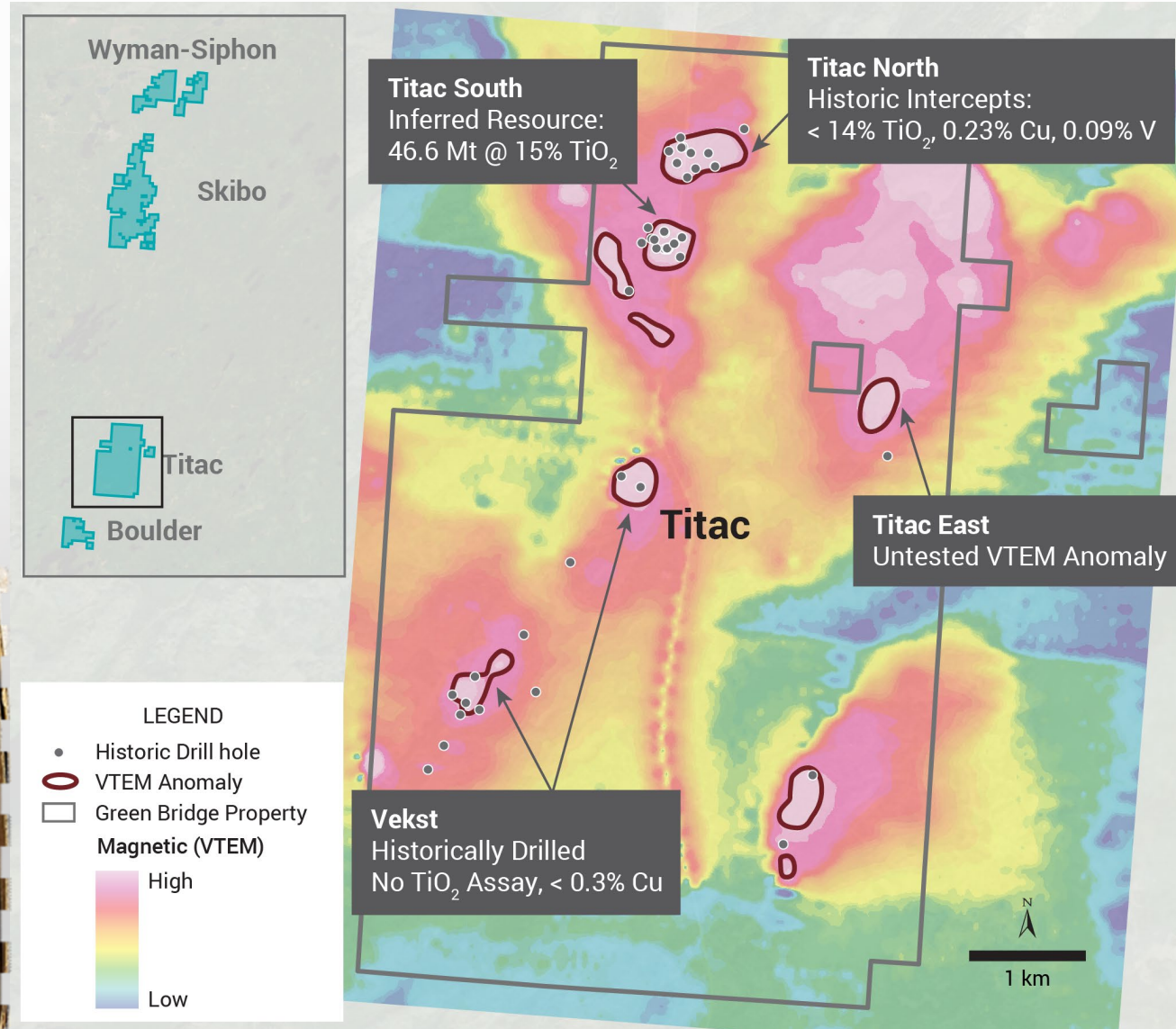
Mineralization @ Titac North with Additional Copper Potential

Titac East Anomaly UNTESTED

- Potential for massive, magmatic sulphide veins outside the OUI's
- VTEM Anomalies identified based on geophysical similarities – create magnetic high “bullseyes”



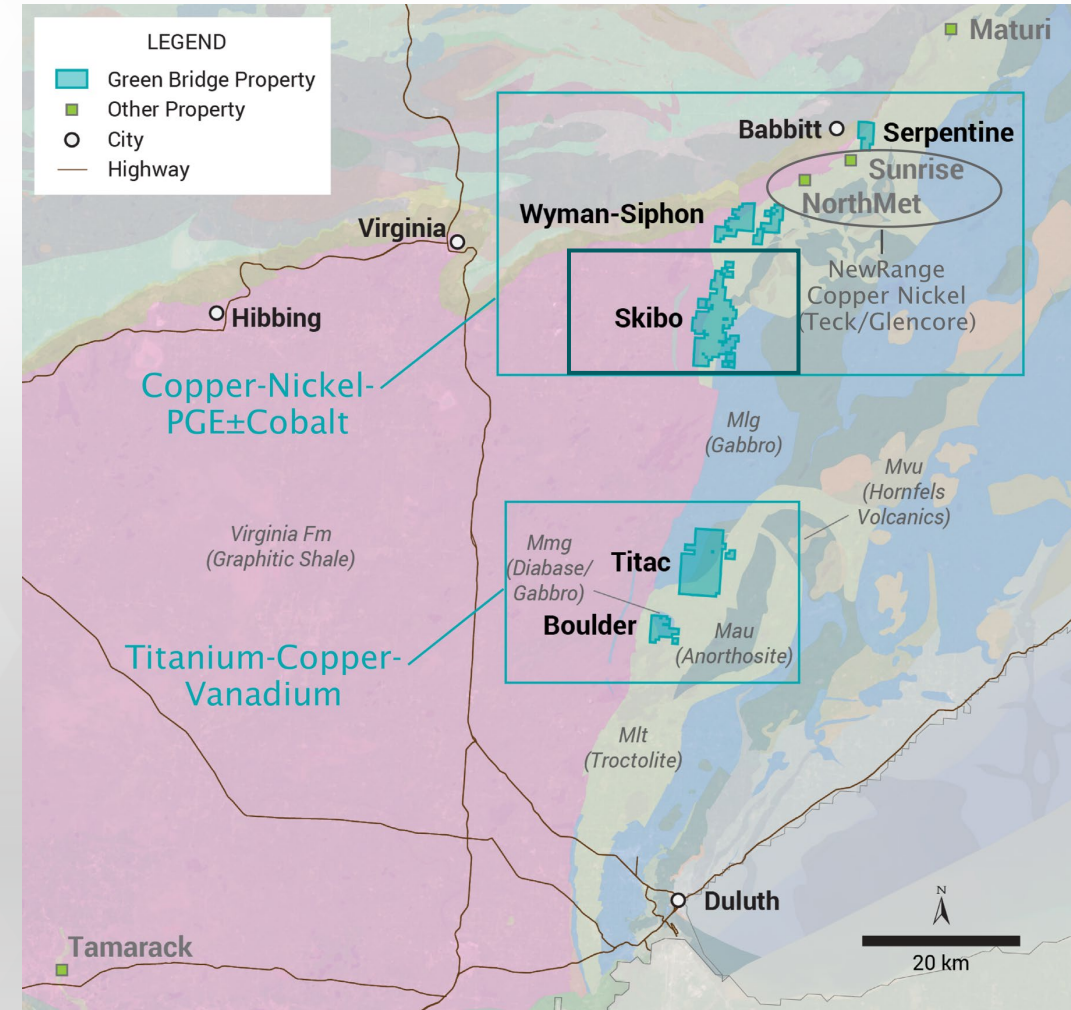
Titanium and Copper Mineralization in Core



South Contact District

Advanced Opportunity in an Underexplored Region of the Duluth Complex, MN USA

- **Three Magmatic Cu–Ni–PGE- Co properties:** Serpentine, **Skibo**, Wyman-Siphon
- **Two TiO₂-Cu-Vanadium Properties:** Titac, Boulder
- Opportunities for **high-grade massive sulphide** and disseminated styles of Cu-Ni ±PGE mineralization
- Emerging exploration model for oxidized ultramafic intrusions for both Cu-Ni ±PGE and Ti-V mineralization
- Current titanium mineral resource and prospectivity to expand the known mineral resource in 2026 to include copper



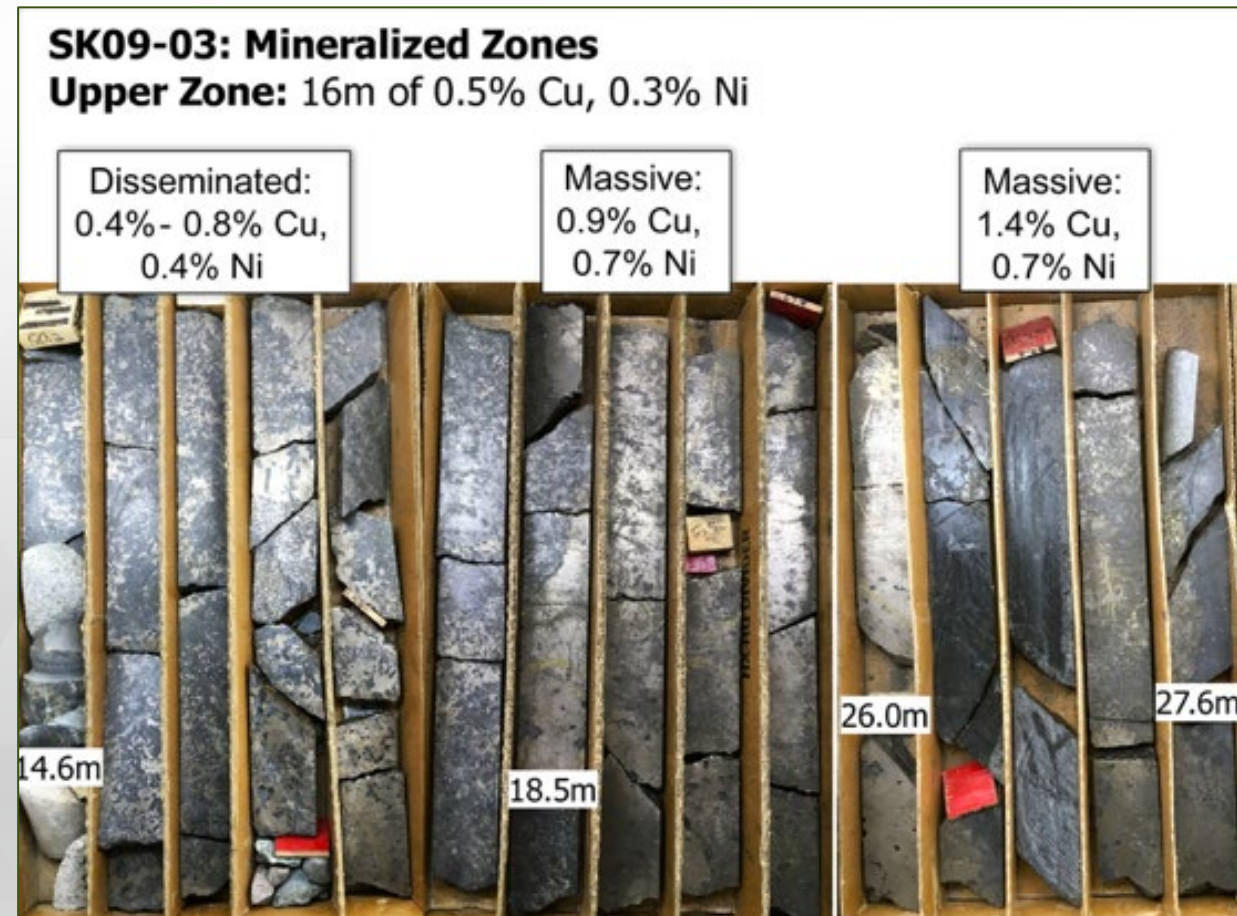
¹Technical Report and Mineral Resource Estimate for the South Contact Zone St Louis County, Minnesota, USA" with an effective date of September 18, 2024, prepared by Michael B. Dufresne (P.Geol, P.Geo), A. Turner (P.Geol, P.Geo.), F. Clarke (P.Geo), C. Bohm (P.Geo)

Skibo – EM-Defined Magmatic Cu–Ni–PGE System

Northern Minnesota, U.S.A.

Emerging High-Priority Drill Target within the South Contact District

- Cu-Ni-PGE ±Co mineralization hosted in troctolites and other rocks associated with the rift-related mafic series
- Mineralization includes massive and disseminated Cu-Ni as well as PGE's and cobalt
- Historical drilling of 10 holes identified massive sulphide veins containing up to 1.4% Cu and 0.7% Ni
 - Of 10 holes, ~50% of the core remained unanalyzed – opportunity to complete sampling and identify larger intervals of mineralization.



Skibo – Integrated Geological & Geophysical Targets

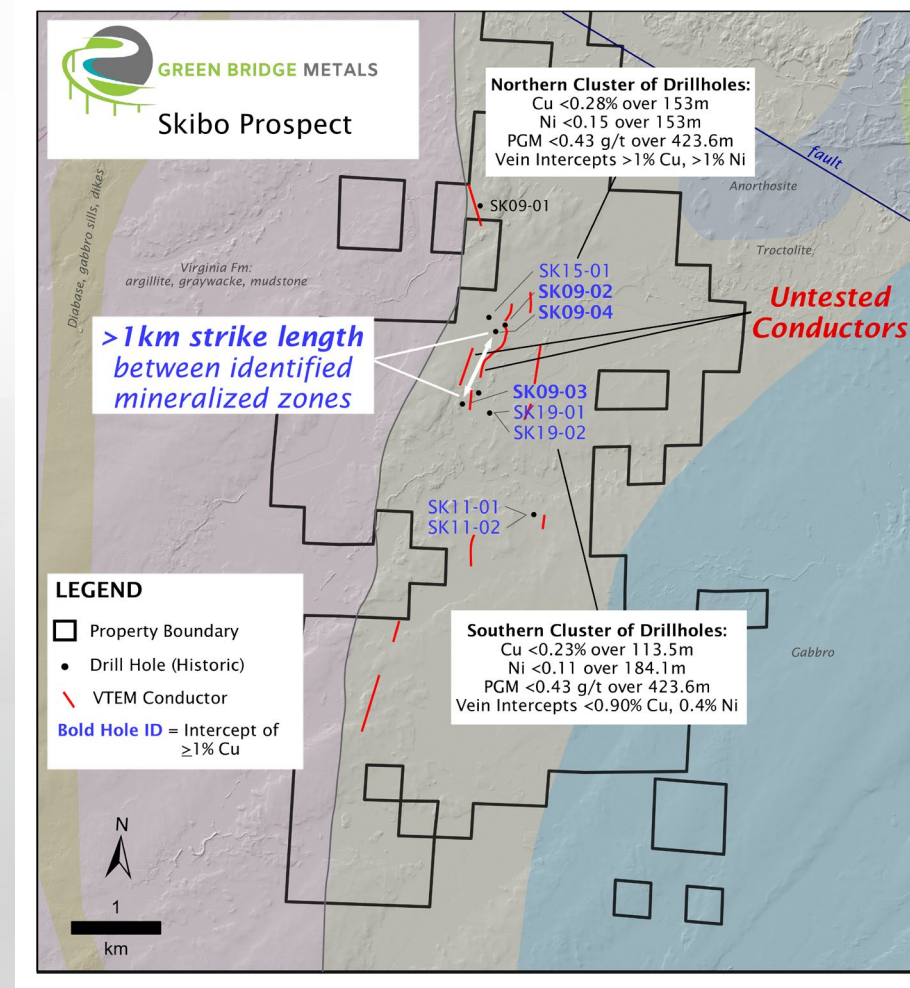
Northern Minnesota, U.S.A.

Resampling Program Validates EM Conductors as Controls on Massive Cu–Ni–PGE Mineralization

- Disseminated Cu–Ni–PGE mineralization over 200–400m intervals in multiple holes
- Massive and semi-massive sulfides spatially associated with mapped EM conductors
- >1 km strike length between mineralized drill clusters
- Conductive trends extend beyond historically drilled areas
- Low-cost sampling program (<US\$180k) materially advanced targeting precision

Intercepts*:

- 1.60% Cu over 3.1m
- 1.04% Cu over 5.0m
- 0.28% Cu over 153m
- 0.83% Cu over 40.5m
- Significant cobalt and PGE credits



*Drill intercepts referenced are from GRBM news release dated 26 February 2026. See the NR for full details, including collar locations, true widths (where known), QA/QC, and lab information. The technical information has been reviewed and approved by Ajeet Milliard, Chief Geologist Green Bridge Metals and a Qualified Person under NI 43-101. These results are preliminary and subject to ongoing verification; an updated technical report will incorporate them when completed.

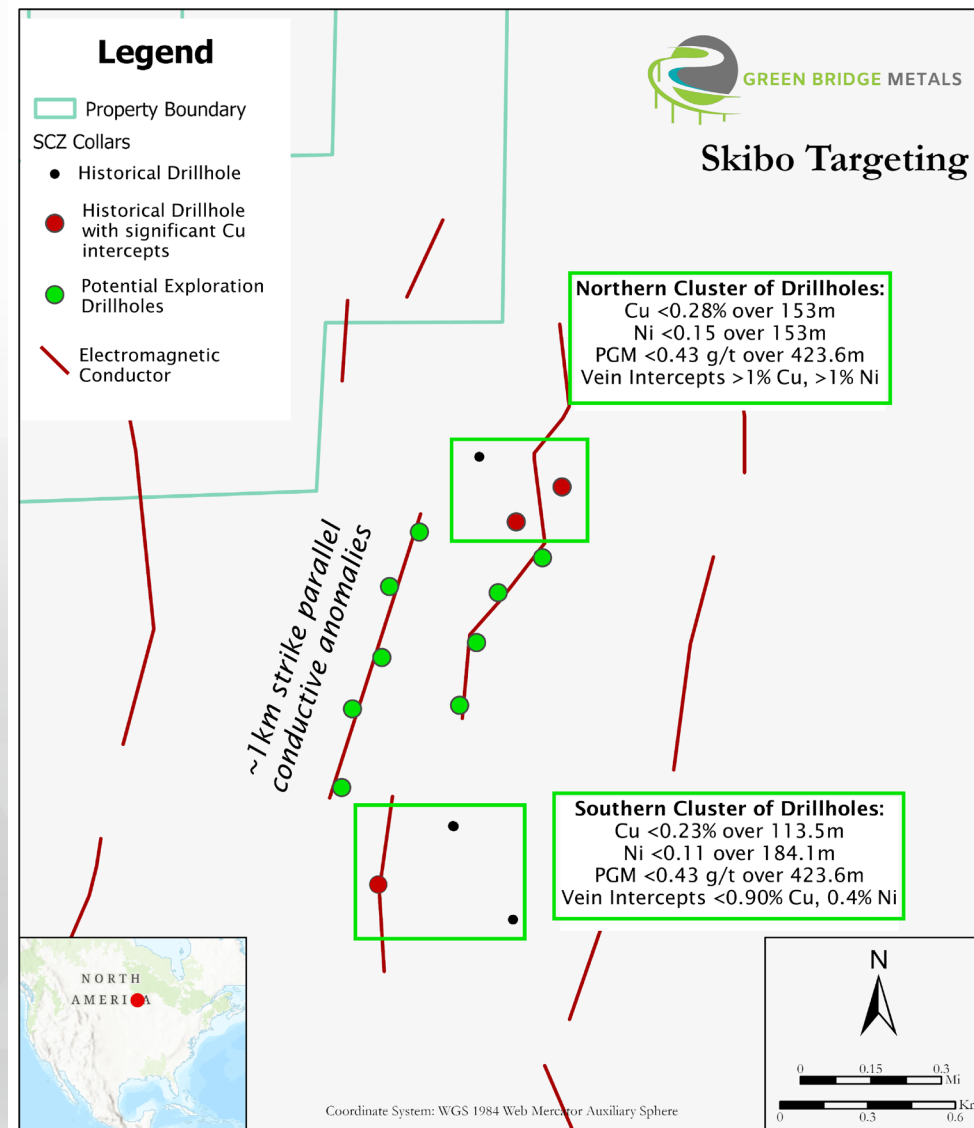
Skibo – Compelling Next-Phase Drill Target

Northern Minnesota, U.S.A.

Disseminated Cu–Ni–PGE mineralization over 200–400m intervals in multiple holes

- Mineralization now demonstrably linked to EM conductors
- Massive sulfide occurrences are not isolated – occur within broader disseminated halos
- Defined step-out and conductor-extension targets identified
- Geology consistent with other basal-contact magmatic sulfide systems in the Duluth Complex
- High-grade massive sulfides validated and expanded through systematic resampling
- >1 km mineralized strike supported by integrated geological and geophysical interpretation

Skibo now represents a well-defined, scalable magmatic sulfide target within the Company's district-scale portfolio.



Skibo – Advancing a Magmatic Cu–Ni–PGE System

South Contact District | Duluth Complex, Minnesota

Skibo has progressed from isolated historical high-grade intercepts to a materially advanced exploration target through systematic data integration.

Advancement Timeline

- Historical drilling identified high-grade massive and semi-massive Cu–Ni sulfide veins
- ~50% of historic core remained unsampled
- July 16 release: Initial resampling confirmed broader disseminated halos and high-grade intervals
- February 26 release: Completion of systematic resampling and full integration with geophysical data

Current Position

- Skibo is now supported by integrated geological, assay, and geophysical datasets defining a coherent mineralized system over >1 km strike length.



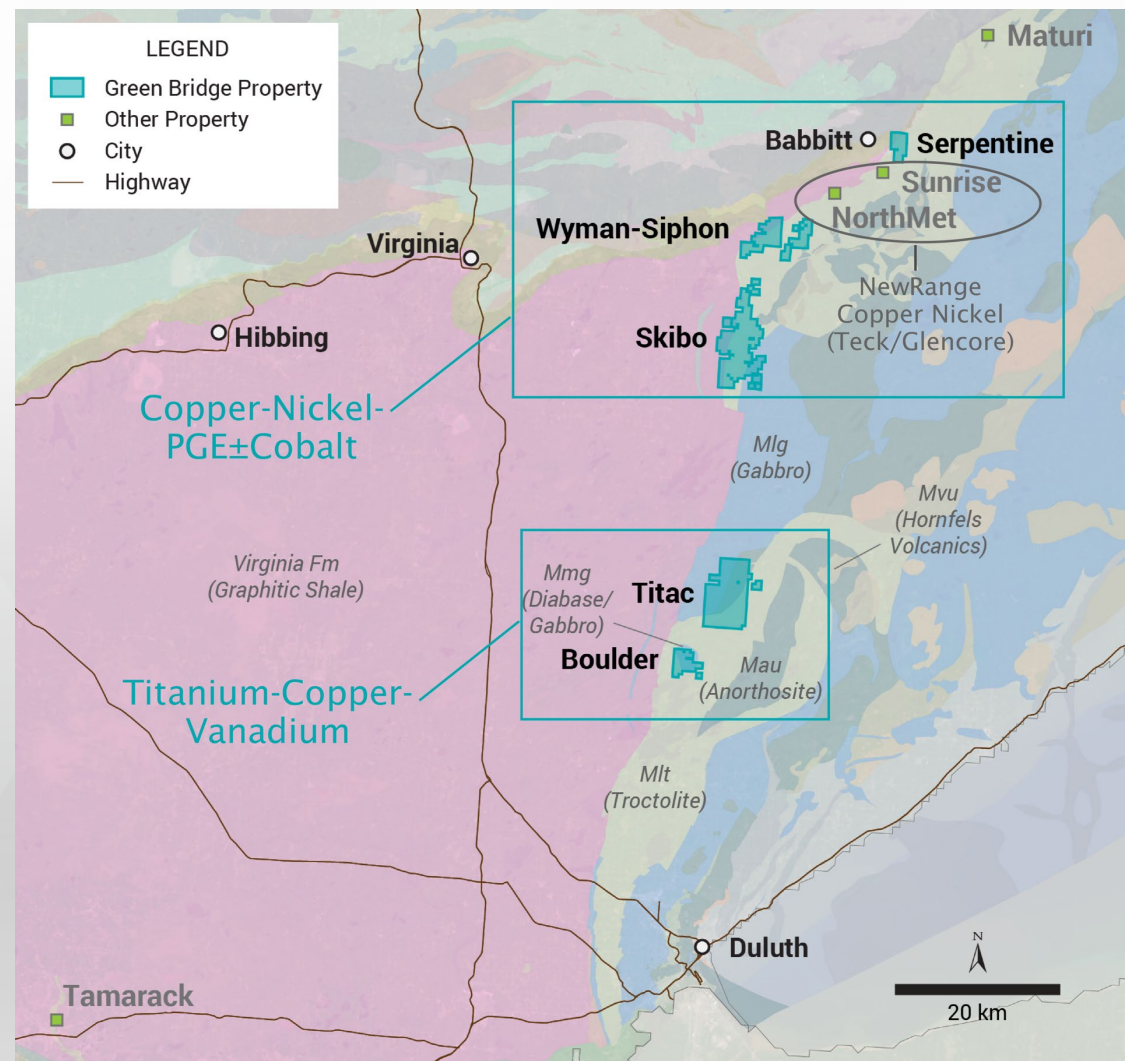
Green Bridge Metals Opportunity Summary

South Contact District: Copper-Nickel-Titanium-Vanadium Blue Sky

- District Scale land package with potential for critical and strategic mineral discovery and growth
- Realized potential for substantial copper nickel, titanium, & vanadium mineralization
- Mining friendly jurisdiction in the United States
- Possible source to contribute critical minerals for a North American supply chain

Serpentine: Copper-Nickel±Cobalt±PGE

- Established Copper-Nickel Inferred Resource
- Ready for infill development and exploration drilling
- Drill permitting in place for 2026
- 2027 Scoping Study (PEA)
- 2029 PFS





GREEN BRIDGE METALS

CSE: GRBM | OTCQB : GBMCF | FWB : J48

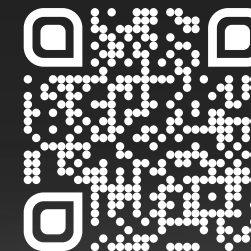
Contact

Investor Communication

investors@greenbridgemetals.com

1 (866) 750-3350

800 - 1199 West Hastings Street
Vancouver, BC V6E 3T5, Canada



References and Footnotes

- ¹"Technical Report and Mineral Resource Estimate for the South Contact Zone Project, St. Louis County, Minnesota, USA" with an effective date of September 18, 2024, prepared by Michael B. Dufresne (P.Geol., P.Geo.), Andrew J. Turner (P.Geol., P.Geo.), Fallon T. Clarke (P.Geo.) and Christian Bohm (P.Geo.).
- ² "Technical Report and Mineral Resource Estimate for the Serpentine Project, St Louis County, Minnesota, USA" with an effective date of July 14, 2025, prepared by Michael B. Dufresne (P.Geol, P.Geo), K.J. Raffle (P.Geo), E. Purtich (P.Eng), F. Brown (P.Geo)
- ³"Twin Metals Minnesota Project Ely, Minnesota, USA NI 43-101 Technical Report on Pre-feasibility Study", with an effective date of 20 August 2014 prepared by Mr John Barber (P.E.) et al.
- ⁴Hauck, S.A., Severson, M.J., Sanko, L., Barnes, S., Morton, P., Alminas, H., Foord, E., Dahlberg, E., "An Overview of the Geology and Oxide, Sulfide, and Platinum-Group Element Mineralization Along the Western and Northern Contacts of the Duluth Complex". in Ojakangas, R. W., Dickas, A. B., and Green, J. C., eds., Middle Proterozoic to Cambrian Rifting, Central North America: Boulder, Colorado, Geological Society of America Special Paper 312.
- ⁵"Mesaba Project Form 43-101F1 Technical Report Mineral Resource Statement St. Louis County, Minnesota" with an effective date of 28 November 2022 prepared by Herb Welhener (SME-RM), Shane Tad Crowie (P.Eng)
- ⁶ "NorthMet Copper-Nickel Project Feasibility Update Hoyt Lakes, Minnesota USA" with an effective date of 30 December 2022 prepared by Alberto Bennett (P.E.), Nicholas Dempers (P.E.), Daniell Neff (P.E.), Thomas J. Radue (P.E.), Daniel Roth (P.E.), Richard Schwering (SME-RM), Laurie Tahija (QP), Jeff S. Ubl (P.E.), Herbert Welhener (SME-RM)
- * Mineral Resources, which are not Mineral Reserves, do not have demonstrated economic viability. The estimate of Mineral Resources may be materially affected by environmental, permitting, legal, title, taxation, socio-political, marketing, or other relevant issues.

The Inferred Mineral Resource in this estimate has a lower level of confidence than that applied to an Indicated Mineral Resource and must not be converted to a Mineral Reserve. It is reasonably expected that the majority of the Inferred Mineral Resource could be upgraded to an Indicated Mineral Resource with continued exploration. The Mineral Resources in this Technical Report were estimated in accordance with the Canadian Institute of Mining, Metallurgy and Petroleum (CIM), CIM Standards on Mineral Resources and Reserves, Definitions and Guidelines prepared by the CIM Standing Committee on Reserve Definitions and adopted by the CIM Council.

Appendix

Serpentine – Adjacent Duluth Complex Copper-Nickel Deposits

Mesabi Mining District Northern Minnesota, U.S.A.

- Adjacent to NewRange’s NorthMet and Sunrise deposits:
 - NorthMet project designated as a FAST-41 Project by U.S. Government for its importance to energy security.
 - Sunrise deposit maps to within 1km of Serpentine property
- Situated in established mining jurisdiction with neighboring railways, roadways, processing facilities and other infrastructure

Basal Duluth Complex Deposit Resources					
Deposit Name	Operator	Category	Tonnes (Mt)	Cu (%)	Ni (%)
Maturi ³	Twin Metals Minnesota	Proven & Probable	484	0.6	0.19
Maturi Southwest ³	Twin Metals Minnesota	Proven & Probable	43	0.48	0.17
Birch Lake ³	Twin Metals Minnesota	Indicated	99.7	0.52	0.16
		Inferred	239	0.46	0.15
Sunrise ⁵	NewRange Copper Nickel	Measured & Indicated	2207	0.43	0.1
		Inferred	1423	0.37	0.09
NorthMet ⁶	NewRange Copper Nickel	Proven & Probable	289	0.29	0.08
		Measured & Indicated	702	0.25	0.07

The QP has been unable to verify the information and that the information is not necessarily indicative of the mineralization on the Serpentine Property

Disclosure of information about adjacent properties is for contextual and geological comparison purposes only. It does not imply that the Company’s Property will achieve similar results. Mineral resources or reserves on adjacent properties do not necessarily indicate economic viability or similar potential on the subject property.

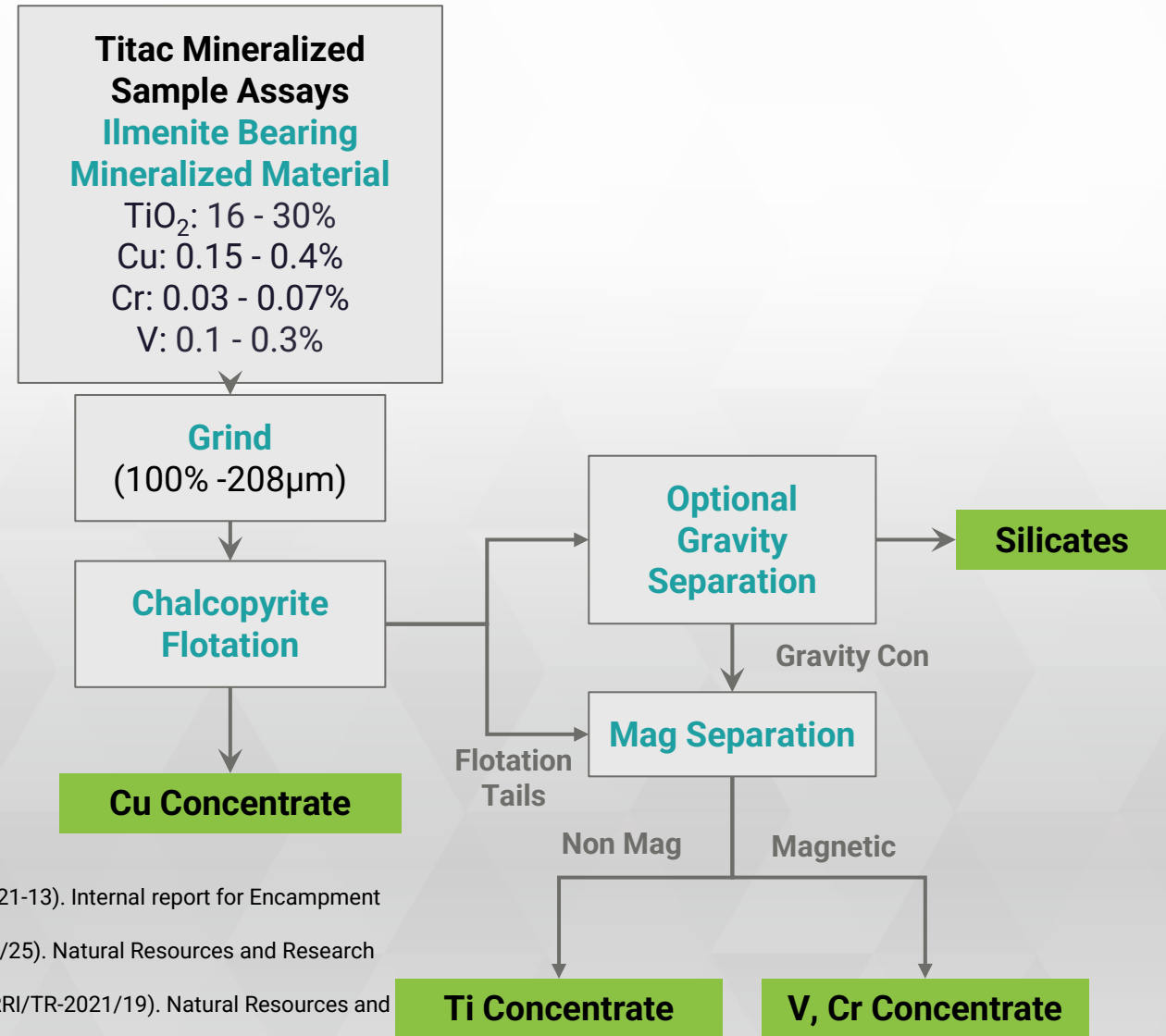
Titac – Preliminary Metallurgical Testing

Northern Minnesota, U.S.A.

- New advancement in hydrometallurgical processing highlights potential to produce Ti, Cu, and V-Cr concentrates
- Preliminary Metallurgical investigation conducted by Process Research ORTECH Inc (PRO) (2021) on Titac core samples¹
- Recovery of Ilmenite from mineralized sample material: ~64%¹
- Recovery of Titanium from ilmenite: ~70%²

Product Potential:

- TiO₂ rutile product with a purity of ~99.5% TiO₂ used as a precursor for pigment manufacture³
- Fe₂O₃ (hematite) product of >95% Fe₂O₃ used as a feed stock for direct reduced iron (DRI) processes³



1. Process Research Ortech Inc. 2021. "Titac Ilmenite Deposit: Metallurgical Recon Investigation" (PRO 21-13). Internal report for Encampment Minerals Inc. December 2, 2021.
 2. Milnar, M. Et. al. 2017. "Pilot-Scale Demonstration of Ilmenite Processing Technology"(NRRI/TR-2017/25). Natural Resources and Research Institute, University of Minnesota Duluth. Process Research Ortech (PRO). May 24, 2017.
 3. Hudak, G., et.al. 2021. "Continuous Pilot-Scale Demonstration of Ilmenite Processing Technology"(NRRI/TR-2021/19). Natural Resources and Research Institute, University of Minnesota Duluth. Process Research Ortech (PRO). May 2021

Directors



David Suda, President, CEO & Director

Mr. Suda contributes 15 years of capital markets expertise, with a focus on corporate strategy, capital raising, sustainability performance, and marketing. He served as a managing director at Beacon Securities Ltd. and Paradigm Capital, raising over \$10 billion for private and public firms. Mr. Suda graduated with honors from York University, holding a bachelor's degree in environmental studies. His strong industry relationships and financial acumen make him a valuable asset to the company.



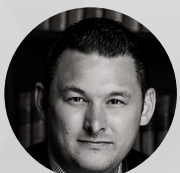
Robert G. Krause, Director

Robert G. Krause is a highly experienced geologist with over 40 years in mineral exploration across North, Central, and South America. A graduate of the University of British Columbia (UBC) in 1985, he has held senior roles, including exploration geologist, project manager, and Vice President of Exploration, with a focus on gold, copper, nickel, and PGE deposits. Mr. Krause has led successful projects in challenging environments, including the discovery of a +1-million-ounce gold-equivalent deposit in Honduras, later acquired by Geomaque Mines and Glamis Gold. He has also played a key role in raising venture capital for junior mining companies and managing multi-million-dollar exploration budgets in the Arctic, South America, and Brazil. In addition to running his own geological consulting business, Mr. Krause has held directorships and contributed to corporate growth and strategy throughout his career.



Mark T. Brown, Director

Mr. Brown holds a Bachelor of Commerce Degree from the University of British Columbia and is a member of the Institute of Chartered Accountants of British Columbia. He has extensive experience as an officer and director in multiple public and private companies, focusing on transactions, financings, and corporate financial planning. He managed financial departments at Eldorado Gold and Miramar Mining, and co-founded Rare Element Resources Ltd., listed on the TSX and NYSE AMEX, prior to which he was with PricewaterhouseCoopers



Christopher Mackay, Director

Mr. Mackay, a renowned professional, brings extensive expertise in real estate and investment. As President of Strand Financial Corporation, he spearheads the company's U.S. real estate operations, managing tasks like acquisition analysis, development, and financing. Under his leadership, the company has built a portfolio of 3,000 strategically located properties across major U.S. markets, a testament to his astute decision-making and strategic acumen.



Tyler Lewis, Director

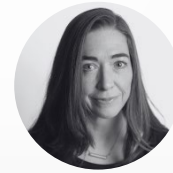
Mr. Tyler Lewis, CEO and Director at Right Season Investments Corp, has achieved sustained growth through astute investment strategies. With 10+ years in the cannabis and nutraceutical markets and a strong accounting background, he excels in identifying undervalued private and public firms. Mr. Lewis is dedicated to enhancing shareholder value and his business acumen and commitment to results make him a valuable asset to the company.

Technical Team



Dr. George Hudak, Technical Advisor

Dr. George Hudak is an economic geologist/applied volcanologist with specific expertise in exploration for Precambrian volcanic- and structurally-hosted base-metal, precious metal and critical mineral deposits and their associated mineralizing systems. Development of higher-value products and more efficient utilization of mineral resources have been key components of the research he has done over the last two decades of his career. He spent 15 years at the Natural Resources Research Institute (NRRI), an applied research lab in the University of Minnesota system research enterprise, where he worked as a senior researcher and Director of the Minerals and Metallurgy research group. George received his Bachelor's, Master's and Doctoral degrees in Geology from Carleton College, the University of Minnesota Duluth, and the University of Minnesota, respectively.



Dr. Ajeet Milliard, Chief Geologist

Dr. Milliard is an accomplished exploration geologist with over 14 years of experience in metals exploration. She holds a PhD in Economic Geology from the University of Nevada, Reno and an M.Sc. in Structural Geology from Oregon State University. Previously, she was part of the exploration team at Newmont Mining, contributing to the development of the Long Canyon Mine in Nevada. For the past five years, Dr. Milliard has excelled in the junior mining sector, specializing in project generation, management, and evaluation.

Technical

2026 Drilling:

- Titac (Q1): 7 diamond core holes; 2200m drilling completed
- Serpentine: 8 diamond core holes planned and permitted. To comprise initial component of a larger infill core drilling program to include 140 drill holes

Sampling:

- Historical core resampling program completed (February 2026)
- Integrated EM-geology targeting model established
- Evaluation of initial step-out drilling program underway

Operational:

- Permitted by Minnesota Department of Natural Resources to drill twelve diamond core drillholes at Serpentine in 2026.
- Engaging with local consulting groups to conduct environmental, biological, and archeological surveys at Serpentine.
- Engaged with local Barr Engineering office for environmental consulting as well as ESG surveys for Scoping Study
- Working with public relations groups local to Minnesota for optics in the community and transparency.